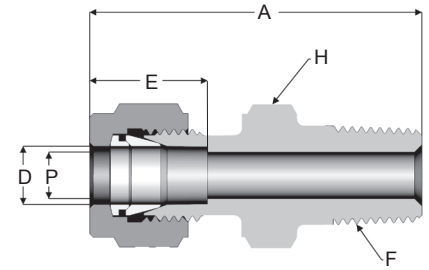
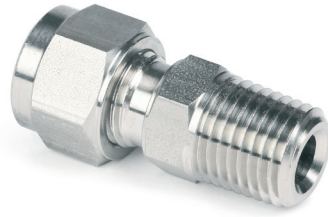


# MALE UNION | UMS

### APPLICATION

Connects a tube to a pipe or a female taper-threaded apparatus. See p.11 for more information about Rotarex compression tube fitting technology.

Special requirements on request



## NPT (N)

### TUBE SIZE - METRIC (mm)

D	F	Reference	A	E	H	P
3	1/4"	UMSI 3 1/4 N	35,6	12,9	14	2,4
4	1/4"	UMSI 4 1/4 N	36,3	13,7	14	3,2
6	1/4"	UMSI 6 1/4 N	37,9	15,3	14	4,8
6	1/2"	UMSI 6 1/2 N	44,7	15,3	22	4,8
8	1/4"	UMSI 8 1/4 N	38,7	16,2	14	6,4
8	1/2"	UMSI 8 1/2 N	45,6	16,2	22	6,4
10	1/4"	UMSI 10 1/4 N	40,9	17,2	17	7,9
10	1/2"	UMSI 10 1/2 N	46,5	17,2	22	7,9
12	1/4"	UMSI 12 1/4 N	43,4	22,8	22	7,1
12	1/2"	UMSI 12 1/2 N	49,0	22,8	22	9,5
14	1/4"	UMSI 14 1/4 N	44,1	24,4	24	7,1
14	1/2"	UMSI 14 1/2 N	44,1	24,4	24	11,1
15	1/2"	UMSI 15 1/2 N	50,5	24,3	24	11,1
16	1/2"	UMSI 16 1/2 N	49,0	24,4	24	11,1
18	1/2"	UMSI 18 1/2 N	50,5	24,4	27	11,1
20	1/2"	UMSI 20 1/2 N	52,3	26,0	30	11,1
22	1/2"	UMSI 22 1/2 N	52,1	26	30	11,1
25	1/2"	UMSI 25 1/2 N	56,9	31,3	36	11,1

\*Specify material when ordering. See page 8 for materials and codes.

### TUBE SIZE - FRACTIONAL (inch)

D	F	Reference	A	E	H (mm)	P
1/8"	1/4"	UMSI 1/8 1/4 N	1.40	0.50	14	3/32"
3/16"	1/4"	UMSI 3/16 1/4 N	1.43	0.54	14	1/8"
1/4"	1/4"	UMSI 1/4 1/4 N	1.49	0.60	14	3/16"
1/4"	1/2"	UMSI 1/4 1/2 N	1.76	0.60	22	3/16"
5/16"	1/4"	UMSI 5/16 1/4 N	1.52	0.64	14	1/4"
3/8"	1/4"	UMSI 3/8 1/4 N	1.61	0.66	17	9/32"
3/8"	1/2"	UMSI 3/8 1/2 N	1.83	0.66	22	9/32"
1/2"	1/4"	UMSI 1/2 1/4 N	1.71	0.90	22	9/32"
1/2"	1/2"	UMSI 1/2 1/2 N	1.93	0.90	22	3/8"
5/8"	1/2"	UMSI 5/8 1/2 N	1.93	0.96	24	3/8"
3/4"	1/2"	UMSI 3/4 1/2 N	1.99	0.96	27	15/32"

Hex flats (H) are metric. Fractional upon request



### MATERIAL CONFIGURATION:

These references are for Stainless Steel only. UMSI components are available in a wide choice of materials, such as Alloy 400, in SuperDuplex, in Alloy C-276, etc. Please refer to the compression tube fittings catalogue ref. EMF-EN-XXXX to know the exact possibilities and references.

## ACCESSORY KIT FOR TRANSMITTER MOUNTING

Accessory kit containing flange seals and cap screws for mounting manifolds directly to a flanged transmitter according to DIN EN 61518, type A

Accessory kits free of oil and lubricant for oxygen service on request



### CONTENT:

- hexagon cap or socket head cap screw
- PTFE flat gasket or FPM O-ring

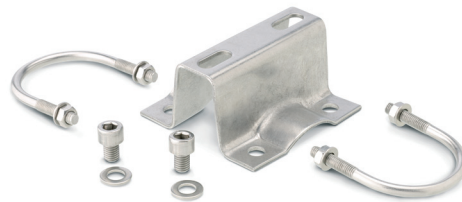
Series of manifolds compatible		Sealing material		Screw	
FLA22		FPM		HC	
For MAN22 series	FLA22	PTFE flat gasket	TFE	Hexagon cap screw	HC
For MAN32 and MAN52 series	FLA32	FPM O-ring	FPM	Socket head cap screw	SH

## MOUNTING KIT, MODEL A

Accessory kit for mounting manifolds to a wall or to a 2" NB pipe

This kit is only adapted to manifolds for direct mounting (MAN22, MAN32 and MAN52 series)

Available in galvanized steel or in stainless steel



### CONTENT:

- 1 Mounting bracket
- 2 Socket head cap screws M 10x14
- 2 Washers B 10,5 DIN 125

And for mounting manifolds to a 2" pipe add:

- 2 'U' bolts 74 mm
- 4 Washers A 8,4 DIN 125
- 4 NUTS M8

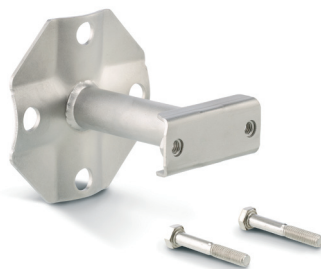
Mounting Kit, model A		Mounting		Material	
MKA		WL		CS	
To a wall or a rack	WL	Galvanized steel	CS		
To a 2" NB pipe	PI	Stainless Steel	SS		

## MOUNTING KIT, MODEL B

Accessory kit for mounting manifolds to a wall or to a 2" NB pipe

This kit is not adapted to manifolds for direct mounting

Available in stainless steel



### CONTENT:

- 1 Mounting bracket
- Screws
- 'U' bolt for mounting manifolds to a 2" pipe
- Washers and nuts for mounting kit for block and bleed valves

Mounting Kit, model A		Mounting		Type of manifolds		Material	
MKB		WL		1		SS	
To a wall or a rack	WL	For MAN 21, MAN25, MAN31 and MAN51 series	1	Stainless Steel	SS		
To a 2" NB pipe	PI	For MAN 23 and MAN24 series	2				

## OVAL FLANGE ADAPTOR

Allows to fix a ½" female NPT port on a manifold for direct mounting presenting a flanged connection according to IEC 61518, type A.

Can also be used to fix a ½" female NPT port on a transmitter presenting a flanged connection according to IEC 61518.

Available in carbon steel 1.0460 and in stainless steel 316L



Oval flange adaptor	Mounting		Material	
OF	M		CS	
Fit to manifolds flanged connections	M	NPT	N	
Fit to transmitters flanged connectors	T	BSPP	G	

## GAUGE SNUBBER

Protects pressure gauges and instruments from system pressure surges and shock

Available in stainless steel 316L

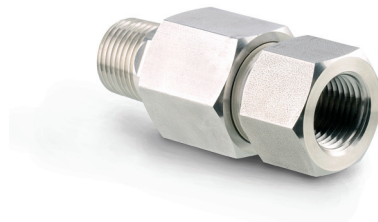


Thread size	Gauge snubber	Material		Thread	
GS	8	SS		N	
½"	8	Stainless Steel	SS	NPT	N
				BSPP	G

## SWIVEL GAUGE ADAPTOR

Enables the easy positioning of the gauge in any direction through 360°

Available with sealing ring in stainless steel, or in PTFE



Swivel gauge adaptor	Seal ring material	
SGA	TFE	
	PTFE seal ring (up to 200°C)	TFE
	St.st. 321 seal ring (up to 500°C)	ST

## VENT VALVE WITH MANUAL HANDLING

Allows to turn a female NPT port into a vent valve by hand

Can be mounted on a transmitter to vent gases directly through it

This valve can be handled manually



Thread size		Vent valve with manual handling	Material	
4		VENM	SS	
1/4"	4		Stainless steel 316L	SS
1/2"		8		

## VENT VALVE WITH HANDLING BY WRENCH

Allows to turn a female NPT port into a vent valve with a manual wrench

Can be mounted on a transmitter to vent gases directly through it

A wrench is needed to handle this valve



Thread size		Vent valve with handling by wrench	Material	
4		VENW	SS	
1/4"	4		Stainless steel 316L	SS
1/2"		8		