

Type **TK23 CNG**

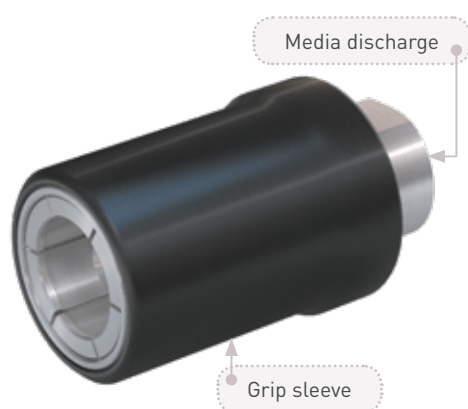
Defuelling Nozzle

for discharging of CNG



General

DESCRIPTION



Features

- Push-Pull actuation
- Extremely high flow rate
- Plastic thermal protection
- WEH® Jaw locking mechanism
- High-grade materials
- Compact design

The TK23 CNG defuelling nozzle is designed specifically for evacuating and discharging CNG of cylinder bundles (e.g. on trailers).

The type TK23 CNG is equipped with a pin, which opens the check valve in the type TN5 CNG receptacle (without filter) and releases the flow. Now the CNG can be discharged from the cylinder bundles. Connecting and disconnecting can only occur in depressurised condition. The TK23 CNG is not equipped with an integrated check valve.

The WEH® TK23 CNG defuelling nozzle is suitable for WEH® TN5 CNG receptacles without filter and with PEEK seal (see accessories).

Application

Defuelling nozzle for discharging of CNG to be used with WEH® TN5 CNG receptacles without filter.

Operation only by specially trained service personnel. Not for self-service operation!

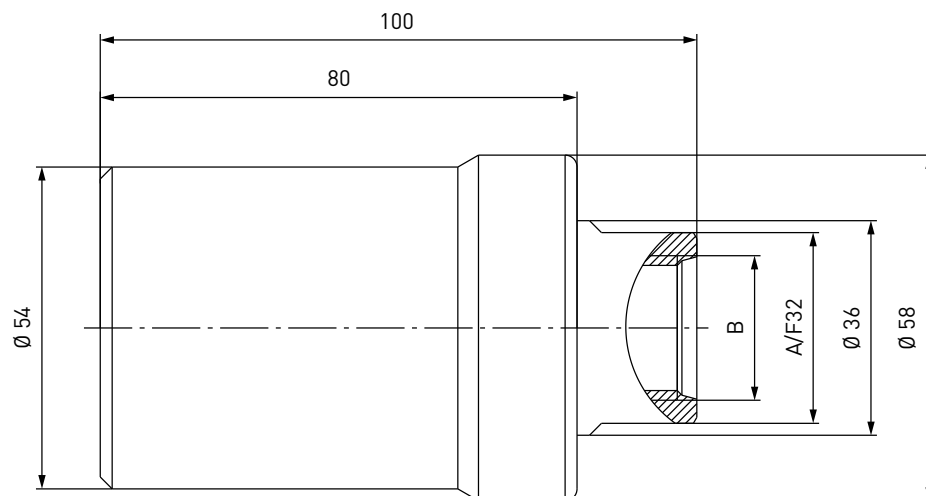
TECHNICAL DATA

Characteristic	Basic version	Options
Nominal bore DN	Depending on design	On request
Pressure range	PN = 200 bar (3,000 psi) PS = 300 bar PT = 450 bar PN = 200 bar (3,000 psi) PS = 260 bar PT = 390 bar (ECE)	
Temperature range	TK23 CNG: -40 °C up to +85 °C (-40 °F up to +185 °F) TN5 CNG: -40°C up to +120 °C (-40 °F up to +248 °F)	On request
Material	Corrosion resistant	On request
Sealing material	Natural gas compatible	On request
Design	TK23 CNG: With plastic thermal protection TN5 CNG: Incl. fittings (only for nozzles with tube fitting)	On request
Weight	Approx. 1 kg (2.20 lbs.)	
Registration	E1 110R-000007 (ECE)	

Ordering

ORDERING | Defuelling nozzle TK23 CNG

approx. dimensions (mm)



Part No.	Description	DN	Pressure (PN)	Discharge B (internal thread)
C1-58985-X01	C1-58985-X01	10	200 bar / 3,000 psi	UNF 7/8\"-14*

* acc. to SAE J1926

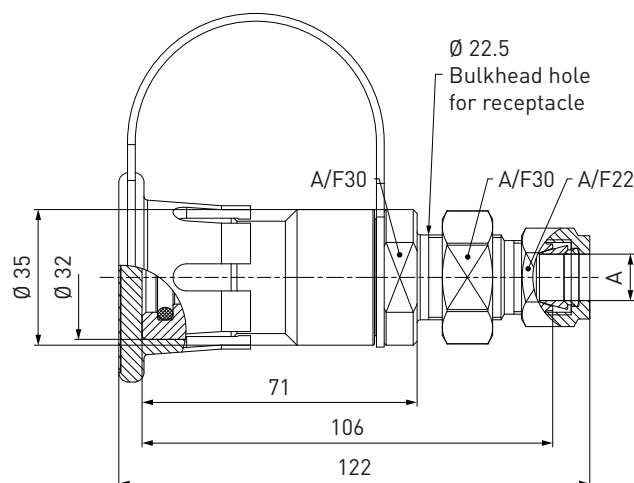
Other connection sizes and versions on request

ACCESSORIES

The following accessories are available for type TK23 CNG:

Receptacle TN5 CNG with tube fitting and PEEK seal (without filter, for TK23 CNG)

approx. dimensions (mm)



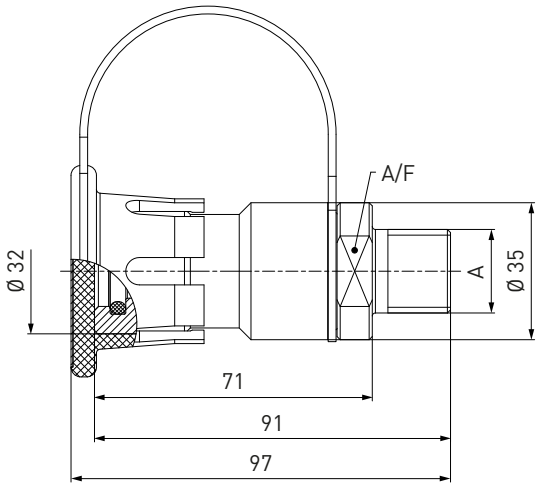
Part No.	Description	DN	Pressure (PN)	Connection A
C1-71939-X01	TN5 CNG	10	200 bar / 3,000 psi	Tube Ø 12*
C1-77635-X01	TN5 CNG	10	200 bar / 3,000 psi	Tube Ø 1/2"
C1-71938-X01	TN5 CNG	14	200 bar / 3,000 psi	Tube Ø 16*

* double ferrule fitting

Ordering

Receptacle TN5 CNG with external thread and PEEK seal (without filter, for TK23 CNG)

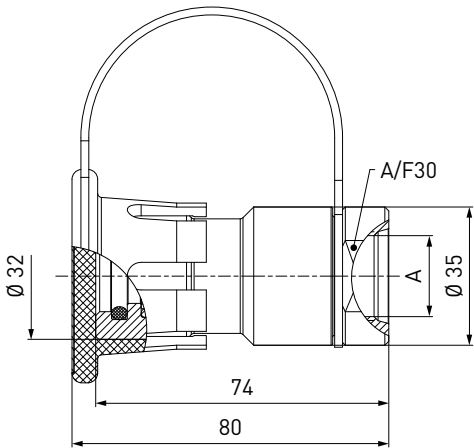
approx. dimensions (mm)



Part No.	Description	DN	Pressure (PN)	Connection A (external thread)	A/F
C1-77638-X01	TN5 CNG	12	200 bar / 3,000 psi	NPT 1/2"	30
C1-77639-X01	TN5 CNG	12	200 bar / 3,000 psi	NPT 1"	36

Receptacle TN5 CNG with internal thread and PEEK seal (without filter, for TK23 CNG)

approx. dimensions (mm)



Part No.	Description	DN	Pressure (PN)	Connection A (internal thread)
C1-108331	TN5 CNG (ECE)	12	200 bar / 3,000 psi	UNF7/8"-14*

* acc. to SAE J1926

Ordering

Hoses

Hoses for connection to the defuelling nozzle, complete with fittings and press-fittings supported by coil spring stubs.



Part No.	Hose B1/B2 (internal thread)	Hose length
E68-1033-3000	UNF 7/8" - 14*	3 m
E68-1033-4000	UNF 7/8" - 14*	4 m
E68-1033-5000	UNF 7/8" - 14*	5 m

* acc. to SAE J514, 37°

Fittings

Stainless steel fittings for connecting the media discharge 'B' to the hose.

Part No.	Description	Connection defuelling nozzle	Connection hose
W6703	Fitting	UNF 7/8" - 14* external thread	UNF 7/8" - 14** external thread

* acc. to SAE J514, 37°

** acc. to SAE J1926

Please see page 126 in catalogue no. 15 onwards for a detailed overview on all available fittings.

Spare parts

Various parts are available as spares for type TK23 CNG:

Part No.	Description
E99-44923	Maintenance spray

Other products

OTHER PRODUCTS

You will find more products in our current catalogue no. 15



Further information on our homepage
www.weh.com

Abbreviations/Definition

Explanation of abbreviations see technical appendix in the catalogue or www.weh.com

Safe product selection

Our WEH® Products are designed to be operated by qualified professional users (insofar as WEH® Products are also designed to be operated by other users in individual cases, this is explicitly stated in the corresponding operating instructions). You alone are responsible for the selection of WEH® Products and their configuration according to the requirements of your system. In doing so, please particularly consider your intended use, your performance data, your material compatibility, your system concept and your system limits as well as your technical and legal requirements for operation, handling and maintenance. The quality and safety of WEH® Products is our highest priority. For this reason, WEH® Products may not be used outside the specifications in the relevant Product data sheets and product descriptions. We also strongly recommend that you refrain from using third-party spare parts or a combination of WEH® Products with unsuitable third-party products. You alone are responsible for reviewing the suitability of third-party products. WEH® Products and WEH® Spare parts comply with our quality and safety standards.

Explanation on the Pressure Equipment Directive

These WEH® Products are generally and exclusively classified as pressure accessories for piping in accordance with Article 2 (5) of the Pressure Equipment Directive 2014/68/EU. These WEH® Products may not be used (i) as safety accessories or (ii) for vessels as defined by the Pressure Equipment Directive 2014/68/EU. Therefore, the application of these WEH® Products must comply with their classification as pressure accessories for piping. The assessment with regard to a different classification can, however, be made on request.

External change management

WEH reserves the right to update, optimise and adjust its products continuously. This may result in corresponding changes of the product. Customers will be informed proactively or unsolicited by WEH only in individual cases about product updates, product optimisations and/or product adaptations that have been carried out. You are free to contact WEH at any time to request information about any product updates, product optimisations and/or product adjustments.

© All rights reserved, WEH GmbH. Any unauthorized use is strictly forbidden. Subject to alteration.
No liability will be assumed for any content. Herewith previous versions are no longer valid.

» Contacting

For queries and further information, please do not hesitate to contact us.

Manufacturer:

WEH GmbH Gas Technology

Josef-Henle-Str. 1
89257 Illertissen / Germany

Phone: +49 7303 95190-0
Fax: +49 7303 95190-9999

Email: h2sales@weh.com
www.weh.com